

Project Information

Project Title	'Recovery of livelihoods of the Lampaya ginger farming community'
Implementing Agency	Lambrineu Foundation
Project Period	From December 2005 to December 2006
Budget	395,490.- Euro (contract sum is 479,152.- US\$)
Before tsunami:	<ul style="list-style-type: none"> • Lhoknga: main source of income is agriculture • Wet (rice) or dry land (ginger, soy bean, chili, melon, coconut) • Ginger: 300 ha., 5000 tons / year • Long tradition, well-organized, farmers group and cooperative • Main sales to cooperative: best security
After tsunami:	<ul style="list-style-type: none"> • Farmers and cooperative lost most of their assets; from seed to fertilizer, from land to crops, from tools to equipment • Farmers have no capital to re-start
Project impact:	<ul style="list-style-type: none"> • Inclusion of 320 full-time ginger farmers • Represents nearly 90% of all full-timers and 65% of all farmers • Rehabilitate of production + enhance knowledge structure

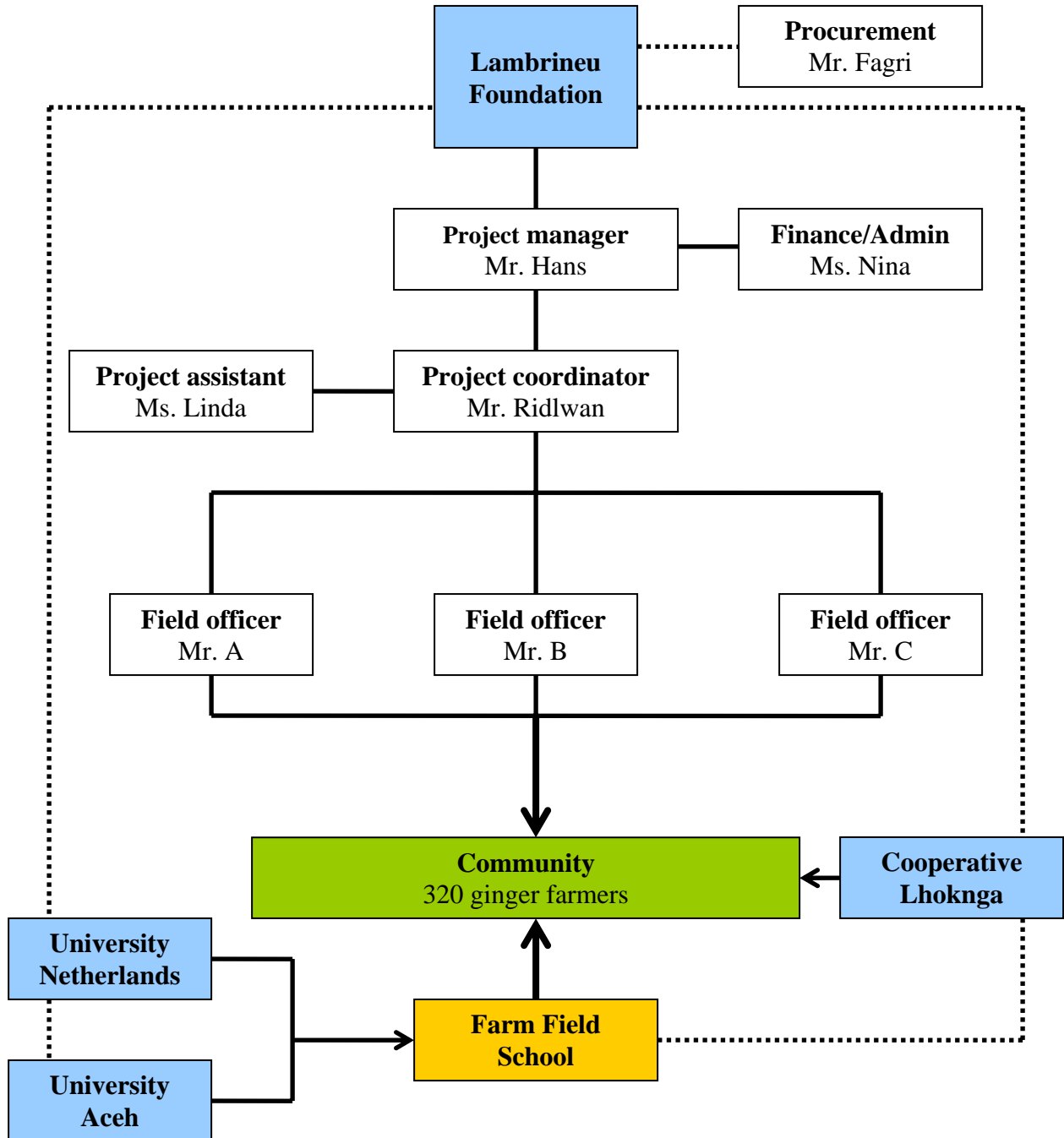
Status of Mobilization

<p>Office & equipment</p> <ul style="list-style-type: none"> - Office ready (Community Home, Lampaya: central location in project area) - Office equipment to be purchased (computers, printer, beamer, desks, chairs) - Motorcycles to be purchased (2 Honda's) - Project car and driver ready to start <p>Staff / Project partners</p> <ul style="list-style-type: none"> - Local project staff hired and ready to start, contracts to be prepared / signed - Local procurement officer ready to start, contract to be prepared / signed - International project staff (IAC) informed, first mission planned in Jan/Feb 2006 - Local university staff (JG) informed, detailed planning required soon - Local cooperative staff not yet informed, detailed planning required soon - Agreements with these three project partners to be prepared / signed <p>Recipients</p> <ul style="list-style-type: none"> - Ginger re-starters (320 in total) to be selected by field officers, in cooperation with the cooperative in Lhoknga, starting 12 December <p>Community consultations</p> <ul style="list-style-type: none"> - Initial consultations carried out during proposal phase - Inception consultations to be held in first half of December (to Head and staff of Lhoknga sub-district and the 25 heads of village) <p>Procurement of goods</p> <ul style="list-style-type: none"> - Agreement with local procurement officer signed - Activity plan leading to timely procurement made and agreed upon

Project organization

There are four project partners: Lambrineu Foundation, the Lhoknga cooperative, Wageningen University in the Netherlands and the Jabal Gafur University in Pidie, Aceh. Lambrineu and the

cooperative work together on selecting farmers and supplying them with farm inputs. Lambrineu hires an external Aceh-based firm for the procurement of goods. At the same time, Lambrineu and the two universities develop a capacity building program to enhance and sustain knowledge among these farmers. The Dutch university will develop the curriculum and train staff from the local university (ToT). This staff will then, from a newly established Farm Field School, train farmers on technical and business related issues.



Logical Framework: ‘Recovery of livelihoods of the Lampaya ginger farming community’

Intervention logic	Objectively verifiable indicator	Means of verification	Assumption / risk
Overall objective:			
Improve living conditions of farming families in the Lhoknga sub-district, Aceh, after the tsunami destroyed their means of production and income.	- The livelihoods of a substantial number of families in the Lhoknga sub-district have improved.	- Reduced number of people are without work, generate income	- Commitment local authorities - Commitment farmers
Purpose:			
A great part of the farming community in the Lhoknga sub-district has been hit severely by the tsunami, leaving them with no means for restarting production and income generation to support their families. The purpose of the project is to provide technical assistance and training to 320 of Lhoknga’s ginger farmers, a crop with a long tradition in that area. The project will support the farmers to produce a high-quality harvest while also build and maintain capacity (knowledge) related to both the production and business elements of ginger farming. Finally, a longer-term relationship between universities in Holland and Aceh are foreseen.	- Approximately 320 farming families have returned to producing ginger and are subsequently generating income. - Institutional support structure has been developed and is believed to be sustainable	- Number of farmers that harvest ginger at the end of the project - Farm Field School is operational, with all actors involved	- Weather conditions - Commitment farmers - Commitment and capacity of cooperative and local university
Results / Outputs:			
1. Inception: team and actors ready for project implementation 2. Farmers are producing ginger with high-quality farm inputs 3. Farmers are trained on production and business elements	- Project team and actors agree on work plan and start implementation phase - Sound procurement of inputs leads to effective production and harvest - Successful training program held and Farm Field School operational	- Agreements signed - Database information - Harvest and income - Farm Field School and training is sustainable	- Commitment Cooper. - Effectiveness local staff - Commitment farmers - Effectiveness local staff - Commitment Univers. - Location FF School

Intervention logic		Objectively verifiable indicator	Means of verification	Assumption / risk
Activities				
Ad. Result / Output 1: Inception: team and actors ready for project implementation				
1.1	Hiring staff; detailed planning with project partners / actors; procurement of project equipment (comp/printer, office furniture, motor bikes)	<ul style="list-style-type: none"> - 3 field officers, 1 project assistant and 1 procurement officer contracted - Local university staff, Lhoknga Co-operative staff, and international staff agree (tasks, budget, missions) - Computers/printer, office furniture, motor bikes purchased 	<ul style="list-style-type: none"> - Signed contract - Minutes of meeting, signed agreement - Receipts of purchases, visit Community Home 	<ul style="list-style-type: none"> - Availability good staff - Commitment and capabilities local actors - Availability of good hardware and software
1.2	Selecting farmers	<ul style="list-style-type: none"> - Selection of 320 farmers finalized 	<ul style="list-style-type: none"> - Database information 	<ul style="list-style-type: none"> - Commitment farmers
1.3	Sign agreements with farmers	<ul style="list-style-type: none"> - 320 farmers sign agreement (no grant but loan with 0% interest) for follow-up project, as agreed with UNDP) 	<ul style="list-style-type: none"> - Signed agreements 	<ul style="list-style-type: none"> - Availability of committed farmers
1.4	Procurement of organic fertilizer	<ul style="list-style-type: none"> - Organic fertilizer purchased according to UNDP guidelines, stored 	<ul style="list-style-type: none"> - Invoice, quotes, supporting documents 	<ul style="list-style-type: none"> - Increasing prices, delivery times
1.5	Procurement of seed	<ul style="list-style-type: none"> - Seed purchased according to UNDP guidelines, stored 	<ul style="list-style-type: none"> - Invoice, quotes, supporting documents 	<ul style="list-style-type: none"> - Increasing prices, delivery times
1.6	Procurement of non-org. fertilizer	<ul style="list-style-type: none"> - Non-organic fertilizer purchased according to UNDP guidelines, stored 	<ul style="list-style-type: none"> - Invoice, quotes, supporting documents 	<ul style="list-style-type: none"> - Increasing prices, delivery times
1.7	Procurement of Pesticides	<ul style="list-style-type: none"> - Pesticides purchased according to UNDP guidelines, stored 	<ul style="list-style-type: none"> - Invoice, quotes, supporting documents 	<ul style="list-style-type: none"> - Increasing prices, delivery times
Ad. Result / Output 2: Farmers are producing ginger with high-quality farm inputs				
2.1	Clearing the land	<ul style="list-style-type: none"> - 64 ha. of land cleared by farmers 	<ul style="list-style-type: none"> - Photo's, field reports 	<ul style="list-style-type: none"> - Commitment and speed
2.2	Rent tractors + coordinate	<ul style="list-style-type: none"> - Tractors ready to prepare the land 	<ul style="list-style-type: none"> - Quotes, planning 	<ul style="list-style-type: none"> - Increasing prices

Intervention logic		Objectively verifiable indicator	Means of verification	Assumption / risk
2.3	Preparing the land with tractors	- 64 ha. of land cleared, ready to plant	- Photo's, field reports	- Reliability contractor
2.4	Apply organic fertilizer	- 64 ha. of land fertilized	- Photo's, field reports	- Delivery, speed farmers
2.5	Planting ginger seed	- 64 ha. of land planted	- Photo's, field reports	- Delivery, speed farmers
2.6	Apply non-organic fertilizer	- 64 ha. of land fertilized	- Photo's, field reports	- Delivery, speed farmers
2.7	Apply pesticides	- 64 ha. of land protected	- Photo's, field reports	- Delivery, speed farmers
2.8	Weed control	- 64 ha. of land continuously weeded	- Photo's, field reports	- Commitment farmers
2.9	Harvest ginger crop	- 64 ha. of ginger crop harvested	- Photo's, field reports	- Commitment farmers
Ad. Result / Output 3: Farmers are trained on production and business elements				
3.1	Planning of training components	- Content of training modules agreed	- Minutes of meeting	- Availability int. staff
3.2	Planning of farm field school	- Organizational set-up agreed upon	- Minutes of meeting	- Agree on location/staff
3.3	Prepare modules	- Training modules prepared	- Training modules	- Availability int. staff
3.4	Training of Trainers on production and business	- Local university staff trained on production and business issues	- Report on training, attendance list	- Availability int. staff, commitment local staff
3.5	Training of farmers on IPM + fertilization	- Farmers trained on IPM and fertilization issues	- Report on training, attendance list	- Availability int./local staff, commit. farmers
3.6	Training of farmers on business and accounting	- Farmers trained on business and accounting issues	- Report on training, attendance list	- Availability int. / local staff, commit. Farmers
3.7	Official opening of farm field school / finalization project	- Farm field school officially opened as Lhoknga's ginger knowledge centre	- Photographs, attendance list, final report	- All activities above

Detailed work plan

	month	Dec		Jan		Feb		Mar		Apr		May		Jun		Jul		Aug		Sep		Oct		Nov		Dec	
		week	1-2	3-4	1-2	3-4	1-2	3-4	1-2	3-4	1-2	3-4	1-2	3-4	1-2	3-4	1-2	3-4	1-2	3-4	1-2	3-4	1-2	3-4	1-2	3-4	1-2
	<u>Output 1: Team & actors ready</u>																										
1.1	Hiring staff, detailed planning, procure c	X	X																								
1.2	Selecting farmers	X	X	X																							
1.3	Sign agreements with farmers		X	X	X																						
1.4	Sign agreements with project partners		X	X																							
1.5	Procurement of organic fertilizer			X	X																						
1.6	Procurement of seed			X	X																						
1.7	Procurement of non-organic fertilizer					X	X																				
1.8	Procurement of pesticides					X	X																				
	<u>2 Output 2. Farmers produce ginger</u>																										
2.1	Clearing the land					X	X																				
2.2	Plan tractors + coordinate logistics						X																				
2.3	Rent tractors, preparing the land, coordinate						X	X	X																		
2.4	Apply organic fertilizer							X	X	X																	
2.5	Planting ginger seed								X	X	X																
2.6	Apply non-organic fertilizer									X	X	X				X	X	X									
2.7	Apply pesticides										X	X	X				X	X	X								
2.8	Weed control								X	X	X	X	X	X	X	X	X	X	X	X	X	X	X	X	X	X	X
2.9	Harvest ginger crop																								X	X	X
	<u>3 Output 3: Farmers trained</u>																										
3.1	Planning of all training components				X																						
3.2	Planning of farm field school				X				X																		
3.3	Prepare modules				X																						
3.4	Training of Trainers on production and business elements									X																	
3.5	Training of farmers (production): 2 d./week									X	X	X	X	X	X	X	X	X	X	X	X	X	X	X	X	X	X
3.6	Training of farmers (business/accounting): 2 d./week									X	X	X	X	X	X	X	X	X	X	X	X	X	X	X	X	X	X
3.7	Official opening of farm field school / finalization ginger project																									X	

Schedule of project deliverables

Expected deliverables	Documentation required	Target delivery date
- Signed contract	Contract	7 November <i>start</i>
- Hiring staff completed - Procurement officer in place - Work plan, log-frame, revised budget submitted to UNDP; to agree upon	Inception report	7 December <i>+1 month</i>
- Progress expected to be according to work plan, log-frame and budget	First progress report First financial report	7 March <i>+4 months</i>
- Progress expected to be according to work plan, log-frame and budget	Second progress report Second financial report	7 July <i>+8 months</i>
- Progress expected to be according to work plan, log-frame and budget - Successful closure of project: opening Farm Field School and harvest of ginger	Final progress report Final financial report	26 December <i>+13 months</i>

Other explanatory notes

- Timeline of work plan: due to the time required for mobilization of farm inputs followed by the required period for the ginger seed to become a crop, the project foresees to finalize in the end of December. This means that the total project time (starting at signing the contract) is 13 months.
- Loan vs. grant: Lambrineu discussed with the UNDP the possibility of providing the farm inputs to producers at a 0% interest loan rather than for free (grant). This will serve two benefits: project ownership of farmers is increased (and with that the feasibility), and the returning money can be used for a similar follow-up project.

Request for revision invoicing & payments

- Due to high costs of farm inputs to be purchased in the early stages of the project, Lambrineu kindly requests from the UNDP an adaptation to the usual payment schedule. (This was foreseen at the time of writing the project proposal: see note on page 12). The table below indicates the official and requested payments per deliverables date.

Deliverables	Dates	Official Payment per Date	Requested Payment per Date
Upon signing contract	7 November 2005	30,000.00	30,000.00
Inception report	7 December 2005	113,745.60	328,214.61
First progress report	7 March 2006	143,745.60	50,037.95
Second progress report	7 July 2006	143,745.60	22,984.24
Final progress report	26 December 2006	47,915.20	47,915.20
TOTAL		479,152.00	479,152.00

Budget

After detailed implementation planning, the project team has decided to make a few minor revisions in the budget. There are however no revisions in the overall sum, nor in the sums for ‘project costs’ and ‘operational costs’, nor in the sub-totals per category. The budget is shown on the following two pages. Revisions have been made for:

- *National project staff*: besides the project coordinator four additional staff members will be hired: an assistant and three field officers. The reason is that field activities (320 farmers need to be coordinated) were underestimated. Days (costs) are taken from the coordinator and divided over the new staff members, thereby not increasing the overall costs of local staff.

- *National project staff*: co-operative staff now receives a fair share of the budget (was zero) for the work it carries out. Their activity was underestimated. University staff receives less days as a result of this; the overall costs do not change.
- *Vehicle rental*: due to the enormous amount of field work it has been decided not to hire a car and driver for two days per week, but to use this budget for purchasing two Honda motorbikes, petrol and maintenance. The bikes will be used by the field officers. The costs have not been changed.
- *Overhead / Contingencies: 4%*: during the inception phase it has been concluded that the (growing) project team is in great need of computers, a printer and beamer, and office furniture. This post has therefore been split in 'overhead: 2%' and 'contingencies: 2%'. The overhead will be used to purchase this equipment.

Budget

		Respon	Unit	Unit	Unit	Total
		sible	costs	Quantity	Type	
	Project costs					
1	Livelihoods project activities: input costs					
A	Training on production					
	facilities: provided by Lambrineu	LF			rooms + facilities	0 €
	modules / handouts for the following training sessions:					
	<i>Training on fertilization techniques</i>	LF	2 €	112	printed material	224 €
	<i>Training + ToT on pest management (IPM)</i>	LF	2 €	115	printed material	230 €
	<i>Training + ToT on post-harvest techniques</i>	LF	2 €	120	printed material	240 €
	lunch for participants for above 3 training sessions	LF	1 €	350	lunch-box	350 €
	Subtotal					1,044 €
B	Training on economics & buiness					
	modules / handouts for the following training sessions:					
	<i>Training on practical accounting</i>	LF	2 €	25	printed material	50 €
	<i>Training + ToT on marketing & sales</i>	LF	2 €	30	printed material	60 €
	<i>Training + ToT on small business management</i>	LF	2 €	30	printed material	60 €
	<i>Training + ToT on farmer field schools</i>	LF	2 €	30	printed material	60 €
	lunch for participants for above 3 training sessions	LF	1 €	120	lunch-box	120 €
	Subtotal					350 €
C	Materials / equipment for production:					
	tractors (rent)	LF	35,000 €	1	rented tractors	35,000 €
	seeds	LF	1,545 €	128	tons	197,760 €
	fertilizer org.	LF	22.74 €	1280	tons	29,111 €
	fertilizer non-org.	LF	791 €	5.12	tons	4,050 €
	pesticides	LF	19 €	256	kg	4,864 €
	Subtotal					270,785 €
	Operational costs					
2	International project staff					
	project manager, agribusiness dev. coordinator	LF	250 €	98	mandays	24,500 €
	post-harvest, coop. manag., field schools specialist	IAC	650 €	40	mandays	26,000 €
	integrated pest management & fertilization specialist	IAC	650 €	18	mandays	11,700 €
	Subtotal					62,200 €

Budget (continued)

		Respon	Unit	Unit	Unit	
		sible	costs	Quantity	Type	Total
	Operational costs					
3	National project staff					
	project coordinator, livelihoods & agricultural specialist	LF	85 €	85	mandays	7,225 €
	project assistant	LF	140 €	12	months	1,680 €
	Field officer 1	LF	181 €	12	months	2,172 €
	Field officer 2	LF	181 €	12	months	2,172 €
	Field officer 3	LF	181 €	12	months	2,172 €
	finance & administrator, secretariat, translator	LF	140 €	12	mandays	1,680 €
	procurement officer	LF	120 €	20	mandays	2,400 €
	university agricultural staff	JGU	70 €	44	mandays	3,080 €
	university economics staff	JGU	70 €	44	mandays	3,080 €
	university staff accom./travel	JGU			mandays	3,059 €
	cooperative management staff	LRC	15 €	312	mandays	4,680 €
	community (ginger producing households)	LRC	0 €	9392	mandays	0 €
	Subtotal					33,400 €
4	Transportation					
	local flights	LF	180 €	5	n-Jakarta	900 €
	international flights	IAC	1,100 €	3	and-Aceh	3,300 €
	DSA / per diems	IAC	90 €	58	DSA	5,220 €
	Subtotal					9,420 €
5	Vehicle rental					
	local travel: purchase 2 mototbikes (Honda)	LF	1,365 €	2		2,730 €
	local travel: petrol / maintenance	LF				350 €
	Subtotal					3,080 €
6	Office costs					
	<u>Note: all provided for by the Lambrineu Foundation</u>					
	Office rental	LF	0 €	1	ity Home	0 €
	Utilities	LF	0 €	1	electricity	0 €
	Telephone/Fax	LF	0 €	1	present	0 €
	Photocopy	LF	0 €	1	present	0 €
	Stationary/Supplies	LF	0 €	1	present	0 €
	Maintenance	LF	0 €	1	present	0 €
	Documentation/reporting	LF	0 €	1	secretary	0 €
	Subtotal					0 €
	SUBTOTAL					380,279 €
	Overhead: 2%	LF			Computers/Printer	7,606 €
	Contingencies: 2%					7,606 €
	TOTAL					395,490 €

Duly authorized to sign the Report for and on behalf of:

The Lambrineu Foundation

8 December 2005

.....

Hans Nijhoff
Project director Lambrineu Foundation
Telephone: 0815 856 20436

Address project office:
Community Home Lampaya
Jl. Banda Aceh – Meulaboh
Km. 12, Desa Lampaya
Lhoknga, Aceh